

\$692,700

House & Land Package

Neo 13-3



Lot 12 Edmondson Park Estate

EDMONDSON PARK

Lot size 301.4m² (14.1m x 21.365m)

3 bed

1 bath

1 car

13.45
SQ

Core Inclusions:

- Urban facade
- Fixed Site Costs
- Coloured Concrete Driveway & Path
- Carpet to Bedrooms & Tiles to living areas
- 60cm Westinghouse Appliances
- Mirrored Sliding Robes
- Downlight Package to Kitchen/Living Area
- Overhead Cabinetry to Kitchen
- 3 Coat Paint System
- Sectional Garage Door including Remote
- Colorbond Roof including Anticon Blanket
- Engineered Steel Frames & Trusses

Package inclusions Neo 13-3 with Urban façade

The home you can't afford at a price you can!

The Neo is an innovative design that is perfect for the first home buyer wanting to get their foot in the door. With 3 generous bedrooms and the flexibility of open plan living this design ticks all the boxes.

Your full financial needs and requirements need to be assessed prior to any offer or acceptance of a loan product.

**BUILD
SMART**

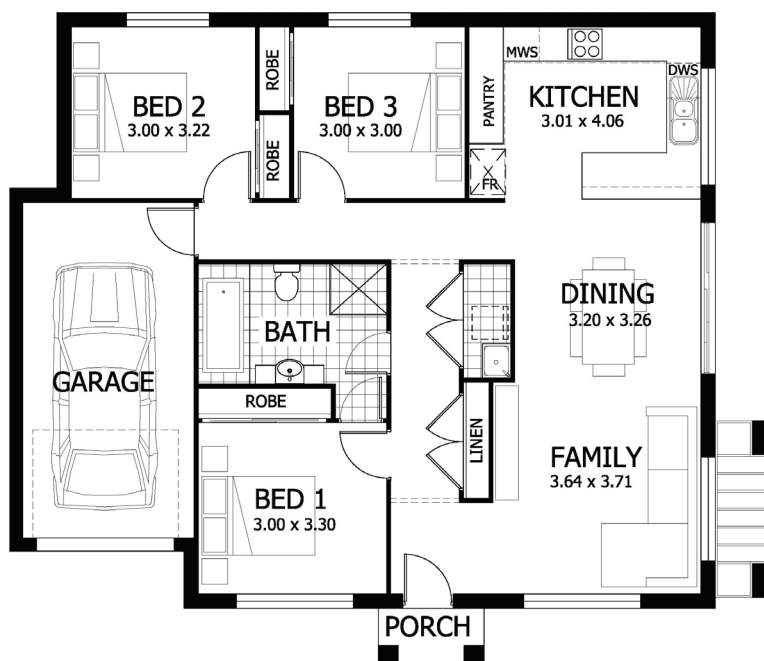
T. 1300 921 383
E. hello@thrivehomes.com.au
thrivehomes.com.au

Thrive Homes

Lot 12 Edmondson Park Estate

EDMONDSON PARK

Living	103.21m ²
Garage	19.86m ²
Porch	1.85m ²
Alfresco	0.0m ²
Total	124.92m ²
Overall Width	12.35m
Overall Length	11.42m



T. 1300 921 383

thrivehomes.com.au

Thrive Homes